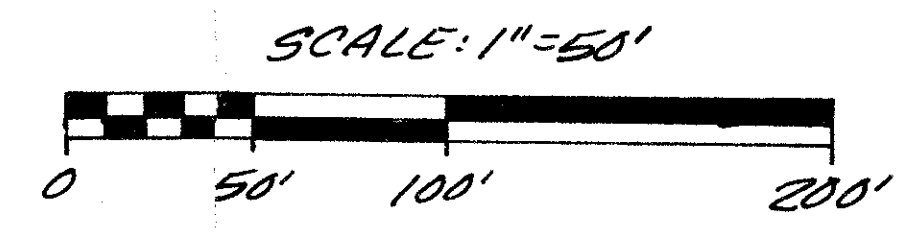


PART OF A P.U.D.  
**MONTEREY LAKE**

SECTION 26, TOWNSHIP 46 SOUTH, RANGE 42 EAST,  
PALM BEACH COUNTY, FLORIDA.

SHEET 3 OF 3 SHEETS



NOT PLATTED

DRAWING NUMBER  
**49/39**

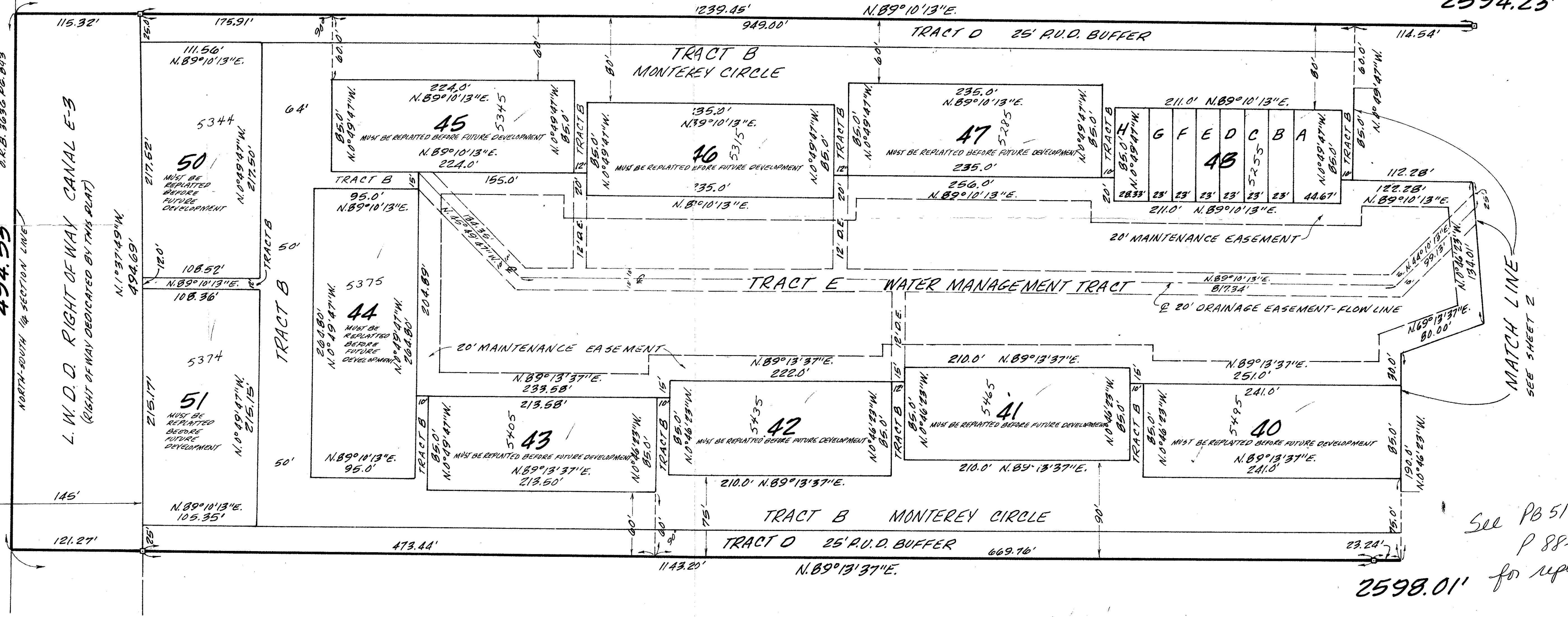
DRAWING NUMBER

DRAWING NUMBER

DRAWING NUMBER

BOCA-DELRAY  
PLAT BOOK 44 PG. 22-23

N 0° 56' 25" W  
L WEST LINE OF L.W.D. EASEMENT  
D.R.B. 3030, PG. 893  
**494.53'**



See PB 51  
P 88-89  
for replat  
**2598.01'**

BOCA-DELRAY  
PLAT BOOK 44 PG 22-23

SUBDIVISION #	146
BOOK	44
FLOOD ZONE	1
QUAD #	26
SP PAD	26
PUD NAME	MONTEREY LAKE

0429-001

**O'BRIEN, SUITER & O'BRIEN, INC.**  
ENGINEERS, SURVEYORS, LAND PLANNERS  
2601 NORTH FEDERAL HIGHWAY, DELRAY BEACH, FLORIDA

DATE: JUNE 1984  
FIELD BOOK: 131  
PAGE: 26  
SHEET 3 OF 3 SHEETS  
SCALE: 1"=50'  
PROJECT NO: 84-140db

Monterey Lake  
49/39